



GSELS Spring Into Sustainability Symposium

A week of programming including lectures and student presentations.

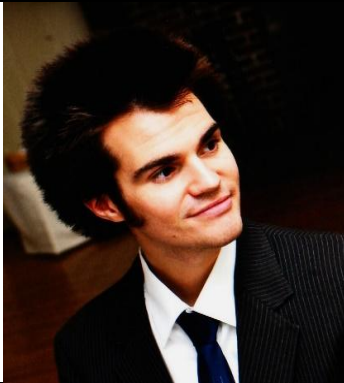
**North Campus, Room 2151 and A104
Monday & Tuesday, March 20-21, 2017,
and Weds. March 22, 2017 at 6:00 – 8:00 PM**

Spring Into Sustainability FEST

March 22nd, 2017 -

All-Day Festival with a Vendor Fair at 12 Noon
North Campus, Building 4 Breezeway

For more information Stephen Nesvacil: snesvac@mdc.edu



Colin Foord of Coral Morphologic

North Campus, Room 2151

Monday, March 20, 2017

9:00 – 10:00 AM

Coral Morphologic is the leading creator of innovative underwater media chronicling Earth’s imperiled coral reefs. Founded in 2007 by marine biologist Colin Foord and musician Jared McKay, it is a multifaceted platform for the advancement of symbiosis between humans and coral. Coral Morphologic’s unique methodology blends science and art in a way that enamors popular culture with the beauty of coral while inspiring the next generation to restore the reefs.



Zelalem Adefris of Catalyst Miami

North Campus, Room 2151

Monday, March 20, 2017

10:00 – 11:00 AM

Zelalem Adefris is the Climate Resilience Program Manager at Catalyst Miami. She holds an MPH in Global Environmental Health from Emory University and a Bachelor’s degree in Community Health from Brown University. At Catalyst Miami, Zelalem works to educate Miami-Dade County residents on climate threats, build climate leadership in Miami-Dade County’s low- and middle-income communities, implement programs that strengthen community resilience, and advocate for proactive climate policies.



Sir Charles Hill of Eco Tech Visions

North Campus, Room 2151

Tuesday, March 21, 2017

9:50 – 11:05 AM

Sir Charles Hill of Eco-Tech Visions is Director of Miami’s first green incubator and makerspace undertaking the creation of the first green city in America with goals of spreading the development framework globally. We assist entrepreneurs in creating, planning, and launching innovative, “green” manufacturing businesses in South Florida. We are launching environmentally-conscious ideas in order to encourage companies and entrepreneurs dealing with renewable energy, energy efficiency, and environmentally beneficial technologies to locate within Miami-Dade County.



Caroline Lewis, Executive Director of CLEO Institute

North Campus, Room 2151

Tuesday, March 21, 2017

11:15 - 12:30 AM

Caroline Lewis is an education strategist and consultant who builds capacity, promotes innovation, and inspires leadership in individuals and institutions. She is the founder and executive director of The CLEO Institute, a non-profit organization that drives climate action through community education. Lewis develops creative, collaborative programs to significantly increase outreach to diverse audiences through multiple access points. She designed and is currently implementing and expanding CLEO to bridge the divide between science and society on the urgency of Climate Change..



Mayor Phil Stoddard of South Miami

North Campus, A104

Wednesday, March 22, 2017

6:00 – 8:00 PM

Philip K. Stoddard is a biology professor at the Florida International University and the Mayor of South Miami. Recently, he appeared alongside actor Jack Black in National Geographic’s film, “Years of Living Dangerously.” Having counseled President Barack Obama about the dangers of climate change, he has been recognized as one of Politico’s Top 50 political innovators for 2016. Moreover, for over twenty years, he has been educating the public regarding the dangers of climate change, the near hegemonic control of FPL over state government, and options for surviving the coming changes to people living in South Florida.



Miami Dade County Resiliency Coordinator Katie Hagemann

North Campus, A104

Wednesday, March 22, 2017

6:00 – 8:00 PM

As Resiliency Coordinator for Miami-Dade County's Office of Resilience, she collaborates with County agencies, business groups, nonprofit organizations, and other partners and stakeholders to effectively integrate resilient core concepts and values into programs, operations and policies. This is primarily accomplished through implementation of the County’s first community-wide Sustainability Plan. In a previous professional position, she was responsible for articulating, “the strategic approach to protecting and adapting vulnerable communities along Connecticut’s coast and inland waterways to rising sea levels and other climate hazard.”